

**LACTALIS
INGREDIENTS
PHARMA**

Trust our Pharmaceutical lactose



We would be pleased to know you and your needs.

Contact us for any specific need or to receive a sample.

For more information on our products
www.pharma.lactalisingredients.com
To contact us
lactalisingredientspharma@fr.lactalis.com



Follow us on LinkedIn
Lactalis Ingredients Pharma



**LACTALIS
INGREDIENTS
PHARMA**

**LOW
NITRITE**

Lactalpa 150

LACTOSE MONOHYDRATE

150 MESH



Lactalis Ingredients Pharma Your French trusted pharmaceutical lactose partner

Lactalis Ingredients Pharma contributes to the security of the drug supply chain by delivering the best of lactose to our customers.

Benefiting from the experience and technology of decades of commitment and passion, **we are able today to enter the excipients' market as a trusted pharmaceutical lactose.**

● **EXPERTISE**

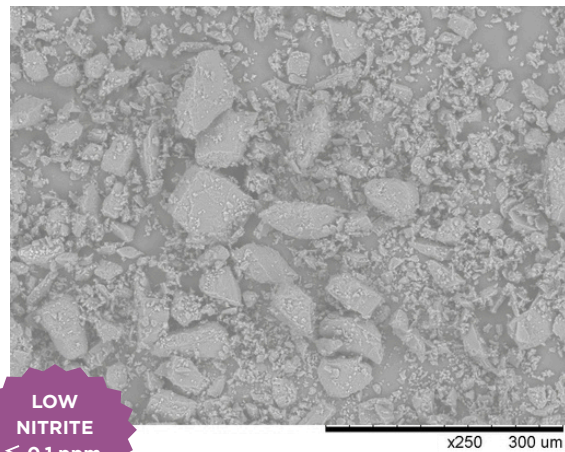
● **QUALITY**

● **RELIABILITY**



Lactalpha 150

SEM image x 250



**LOW
NITRITE
≤ 0.1 ppm**

Lactalpha is a range of pharmaceutical grade milled and sieved lactose monohydrate. Lactalpha can easily be used for your OSD applications, in tablets from wet or dry granulation, capsules and sachets.

Lactalpha 150 is a 150 mesh pharmaceutical milled lactose conforming with the lactose monohydrate monographs of the current Pharmacopoeias (Ph. Eur., USP-NF and JP).

Production site
Retiers, France

Lactose properties
Diluent / Good mixing /
Tablet binder

Process
Wet granulation,
dry granulation

Galenic applications
Tablet

Lactalpha 150 guarantees a nitrite content of ≤ 0.1 ppm, to help the pharmaceutical industry meet the growing challenges related to nitrosamines. Nitrite testing is performed on every batch produced, and the detailed value are included on each CoA.

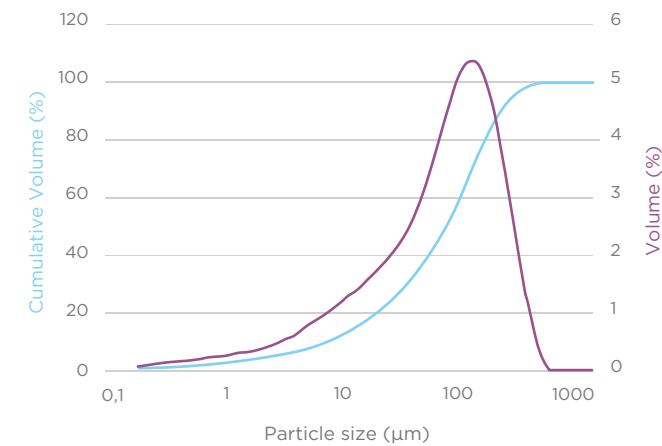
Lactalpha 150

Key physical figures

Characteristics	Specification
Bulk density	610 g/L
Tapped density	910 g/L
Hausner ratio	1.5
Carr's index	33%

Particle Size Distribution

PSD by laser diffraction (indicative values)



Laser diffraction

D10: 7 µm
D50: 65 µm
D90: 190 µm

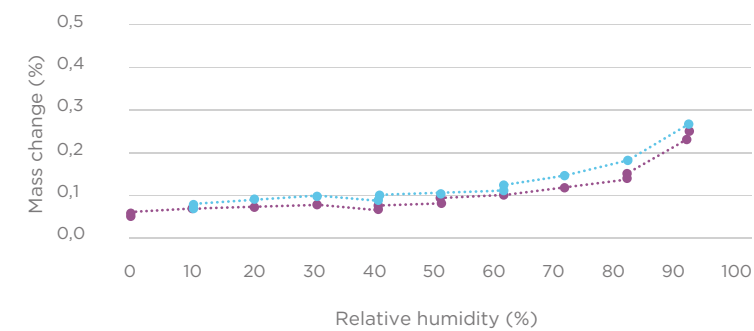
Air jet sieve

<45 µm: $\leq 50\%$
<100 µm: $\geq 70\%$
<150 µm: $\geq 85\%$
<315 µm: $\geq 99\%$

— volume
— cumulative volume

Low water absorption for high stability

Sorption isotherm at 25°C



Lactalpha 150 sorption isotherm at 25°C, measured by SPSx-1µ vapor sorption analyzer.

At 25°C, Lactalpha 150 absorbs little water up to 90% relative humidity, and thus shows a great stability.

.....● desorption
.....● sorption