

**LACTALIS
INGREDIENTS
PHARMA**

Trust our Pharmaceutical lactose



We would be pleased to know you and your needs.

Contact us for any specific need or to receive a sample.

For more information on our products
www.pharma.lactalisingredients.com
To contact us
lactalisingredientspharma@fr.lactalis.com



Follow us on LinkedIn
Lactalis Ingredients Pharma



**LACTALIS
INGREDIENTS
PHARMA**

**LOW
NITRITE**

Lactalpa 50

LACTOSE MONOHYDRATE

50 MESH



Lactalis Ingredients Pharma Your French trusted pharmaceutical lactose partner

Lactalis Ingredients Pharma contributes to the security of the drug supply chain by delivering the best of lactose to our customers.

Benefiting from the experience and technology of decades of commitment and passion, **we are able today to enter the excipients' market as a trusted pharmaceutical lactose.**

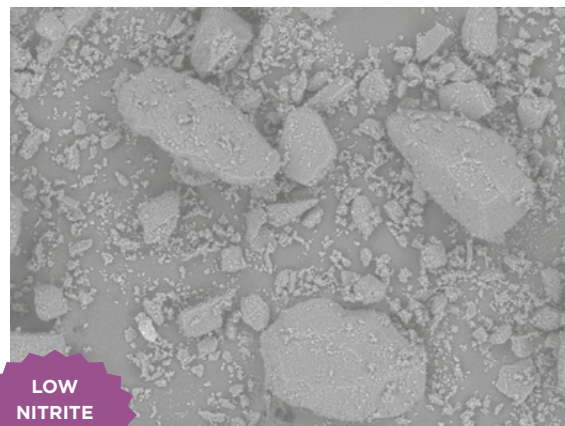
EXPERTISE

QUALITY

RELIABILITY

Lactalpha 50 SIEVED LACTOSE MONOHYDRATE

SEM image x 250



Lactalpha is a range of pharmaceutical grade milled and sieved lactose monohydrate. Lactalpha can easily be used for your OSD applications, in tablets from wet or dry granulation, capsules and sachets.

Lactalpha 50 is a 50 mesh pharmaceutical sieved lactose conforming with the lactose monohydrate monographs of the current Pharmacopoeias (Ph. Eur., USP-NF and JP).

Production site
Retiers, France

Process
Dry blending

Lactose properties
Diluent / Flowability

Galenic applications
Capsule / Sachet



Lactalpha 50 guarantees a nitrite content of ≤ 0.1 ppm, to help the pharmaceutical industry meet the growing challenges related to nitrosamines. Nitrite testing is performed on every batch produced, and the detailed value are included on each CoA.

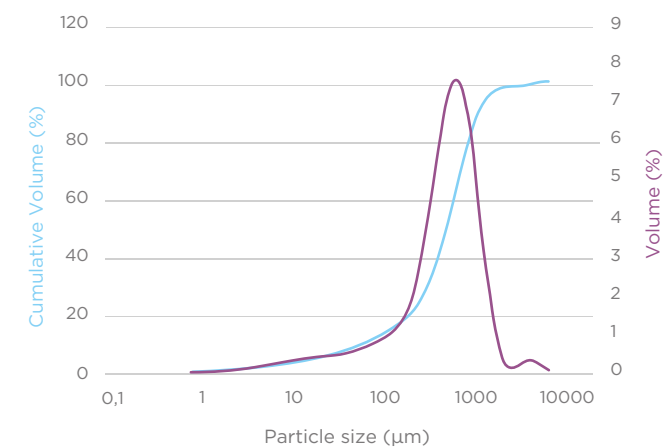
Lactalpha 50

Key physical figures

Characteristics	Specification
Bulk density	870 g/L
Tapped density	1 050 g/L
Hausner ratio	1.21
Carr's index	17%

Particle Size Distribution

PSD by laser diffraction (indicative values)



Laser diffraction

D10: 50 μm
D50: 330 μm
D90: 720 μm

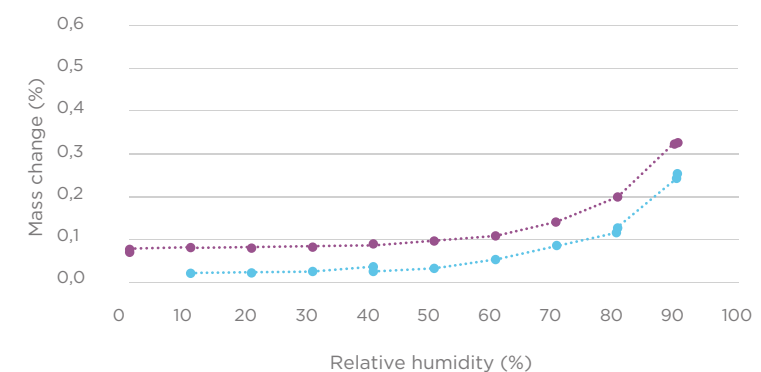
Air jet sieve

<200 μm : 20-60%
<400 μm : $\geq 60\%$

— volume
— cumulative volume

Low water absorption for high stability

Sorption isotherm at 25°C



Lactalpha 50 sorption isotherm at 25°C, measured by SPSx-1 μ vapor sorption analyzer.

At 25°C, Lactalpha 50 absorbs little water up to 90% relative humidity, and thus shows a great stability.

.....● desorption
.....● sorption