

**LACTALIS
INGREDIENTS
PHARMA**

Trust our Pharmaceutical lactose



We would be pleased to know you and your needs.

Contact us for any specific need or to receive a sample.

For more information on our products
www.pharma.lactalisingredients.com
To contact us
lactalisingredientspharma@fr.lactalis.com



Follow us on LinkedIn
Lactalis Ingredients Pharma



**LACTALIS
INGREDIENTS
PHARMA**

**LOW
NITRITE**

Lactalpha 100

LACTOSE MONOHYDRATE

100 MESH



Lactalis Ingredients Pharma

Your French trusted pharmaceutical lactose partner

Lactalis Ingredients Pharma contributes to the security of the drug supply chain by delivering the best of lactose to our customers.

Benefiting from the experience and technology of decades of commitment and passion, **we are able today to enter the excipients' market as a trusted pharmaceutical lactose.**

EXPERTISE

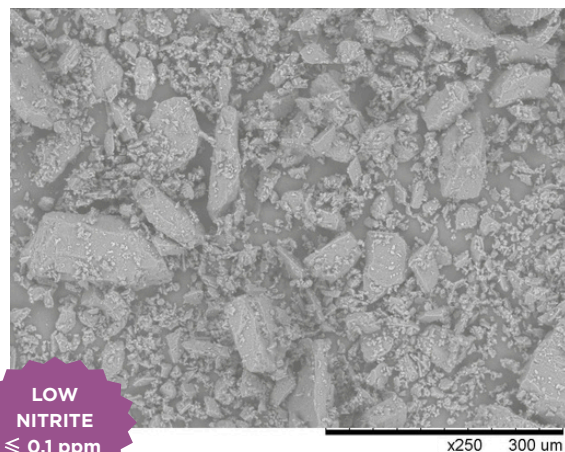
QUALITY

RELIABILITY

Lactalpa 100

SIEVED LACTOSE MONOHYDRATE

SEM image x 250



LOW
NITRITE
≤ 0.1 ppm

Lactalpa is a range of pharmaceutical grade milled and sieved lactose monohydrate. Lactalpa can easily be used for your OSD applications, in tablets from wet or dry granulation, capsules and sachets.

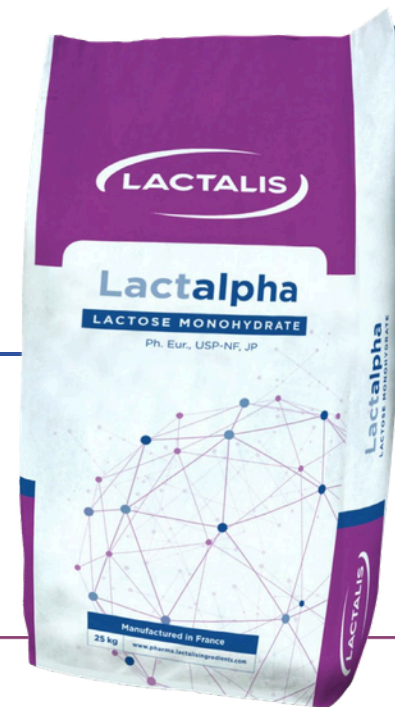
Lactalpa 100 is a 100 mesh pharmaceutical milled lactose conforming with the lactose monohydrate monographs of the current Pharmacopoeias (Ph. Eur., USP-NF and JP).

Production site
Retiers, France

Lactose properties
Diluent / Flowability

Process
Dry blending

Galenic applications
Capsule / Sachet



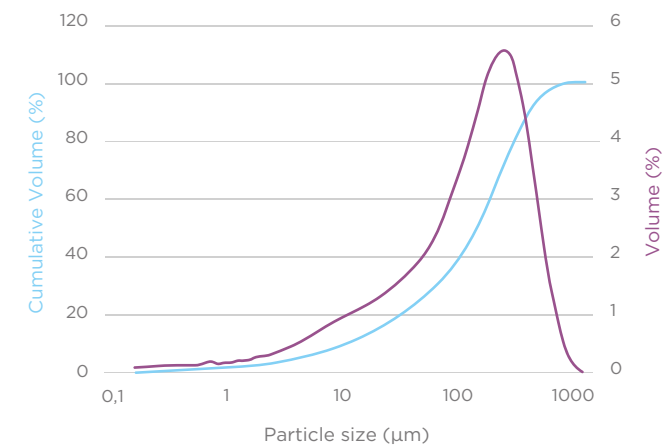
Lactalpa 100

Key physical figures

Characteristics	Specification
Bulk density	700 g/L
Tapped density	970 g/L
Hausner ratio	1.39
Carr's index	28%

Particle Size Distribution

PSD by laser diffraction (indicative values)



Laser diffraction

D10: 10 µm
D50: 110 µm
D90: 290 µm

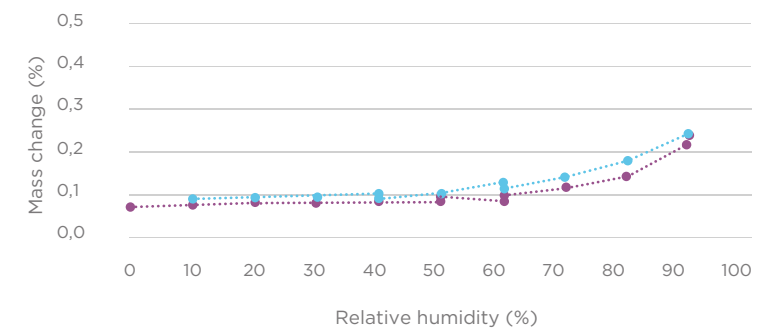
Air jet sieve

<63 µm: ≤ 40%
<150 µm: 60-80%
<250 µm: ≥ 95%

— volume
— cumulative volume

Low water absorption for high stability

Sorption isotherm at 25°C



Lactalpa 100 sorption isotherm at 25°C, measured by SPSx-1µ vapor sorption analyzer.

At 25°C, Lactalpa 100 absorbs little water up to 90% relative humidity, and thus shows a great stability.

.....● desorption
.....● sorption

Lactalpa 100 guarantees a nitrite content ≤ 0.1 ppm, to help the pharmaceutical industry meet the growing challenges related to nitrosamines. Nitrite testing is performed on every batch produced, and the detailed value are included on each CoA.