

**LACTALIS  
INGREDIENTS  
PHARMA**

**Trust our Pharmaceutical lactose**



We would be pleased to know you and your needs.

**Contact us for any specific need or to receive a sample.**

**For more information on our products**  
[www.pharma.lactalisingredients.com](http://www.pharma.lactalisingredients.com)

**To contact us**  
[lactalisingredientspharma@fr.lactalis.com](mailto:lactalisingredientspharma@fr.lactalis.com)

**in**

**Follow us on LinkedIn**  
Lactalis Ingredients Pharma



**LACTALIS  
INGREDIENTS  
PHARMA**

# Lactalpha 50

**LACTOSE MONOHYDRATE**

**50 MESH**



# Lactalis Ingredients Pharma Your French trusted pharmaceutical lactose partner

Lactalis Ingredients Pharma contributes to the security of the drug supply chain by delivering the best of lactose to our customers.

Benefiting from the experience and technology of decades of commitment and passion, **we are able today to enter the excipients' market as a trusted pharmaceutical lactose.**

● EXPERTISE

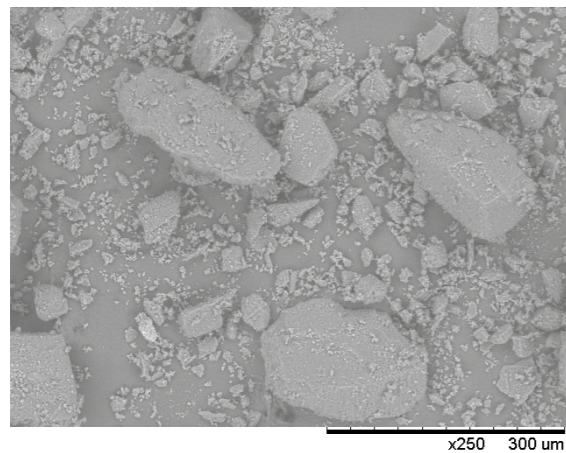
● QUALITY

● RELIABILITY

## Lactalpha 50 SIEVED LACTOSE MONOHYDRATE



SEM image x 250



Lactalpha is a range of pharmaceutical grade milled and sieved lactose monohydrate. Lactalpha can easily be used for your OSD applications, in tablets from wet or dry granulation, capsules and sachets.

Lactalpha 50 is a 50 mesh pharmaceutical sieved lactose conforming with the lactose monohydrate monographs of the current Pharmacopoeias (Ph. Eur., USP-NF and JP).

**Production site**  
Retiers, France

**Process**  
Dry blending

**Lactose properties**  
Diluent / Flowability

**Galenic applications**  
Capsule / Sachet



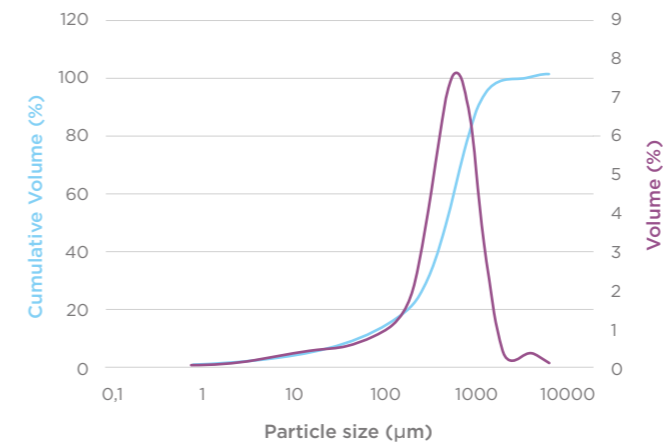
## Lactalpha 50

### Key physical figures

Characteristics	Specification
Bulk density	870 g/L
Tapped density	1 050 g/L
Hausner ratio	1.21
Carr's index	17%

### Particle Size Distribution

PSD by laser diffraction (indicative values)



**Laser diffraction**

D10: 50 µm  
D50: 330 µm  
D90: 720 µm

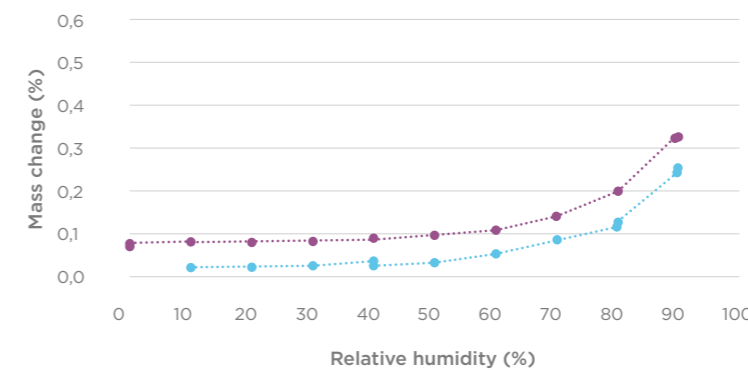
**Air jet sieve**

<200 µm: 20-60%  
<400 µm: ≥60%

— volume  
— cumulative volume

### Low water absorption for high stability

Sorption isotherm at 25°C



Lactalpha 50 sorption isotherm at 25°C, measured by SPSx-1µ vapor sorption analyzer.

At 25°C, Lactalpha 50 absorbs little water up to 90% relative humidity, and thus shows a great stability.

—●— desorption  
—●— sorption