

**LACTALIS  
INGREDIENTS  
PHARMA**

**Trust our Pharmaceutical lactose**



We would be pleased to know you and your needs.

**Contact us for any specific need or to receive a sample.**

**For more information on our products**  
[www.pharma.lactalisingredients.com](http://www.pharma.lactalisingredients.com)

**To contact us**  
[lactalisingredientspharma@fr.lactalis.com](mailto:lactalisingredientspharma@fr.lactalis.com)

**in**

**Follow us on LinkedIn**  
Lactalis Ingredients Pharma



**LACTALIS  
INGREDIENTS  
PHARMA**

# Lactalpha 200

**LACTOSE MONOHYDRATE**

**200 MESH**



# Lactalis Ingredients Pharma Your French trusted pharmaceutical lactose partner

Lactalis Ingredients Pharma contributes to the security of the drug supply chain by delivering the best of lactose to our customers.

Benefiting from the experience and technology of decades of commitment and passion, **we are able today to enter the excipients' market as a trusted pharmaceutical lactose.**

EXPERTISE

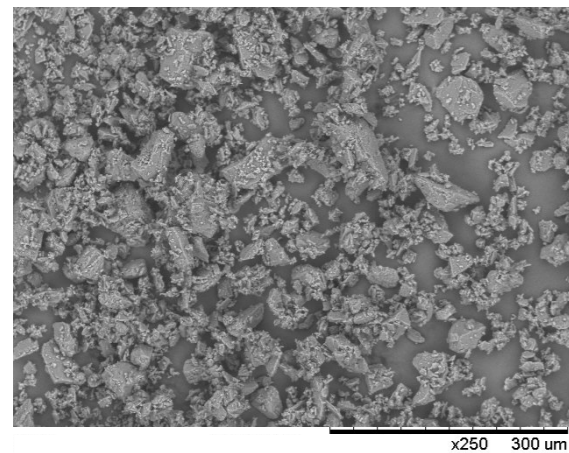
QUALITY

RELIABILITY

## Lactalpha 200 MILLED LACTOSE MONOHYDRATE



SEM image x 250



Lactalpha is a range of pharmaceutical grade milled and sieved lactose monohydrate. Lactalpha can easily be used for your OSD applications, in tablets from wet or dry granulation, capsules and sachets.

Lactalpha 200 is a 200 mesh pharmaceutical milled lactose conforming with the lactose monohydrate monographs of the current Pharmacopoeias (Ph. Eur., USP-NF and JP).

**Production site**  
Retiers, France

**Process**  
Wet granulation,  
dry granulation

**Lactose properties**  
Diluent / Good mixing /  
Tablet binder

**Galenic applications**  
Tablet

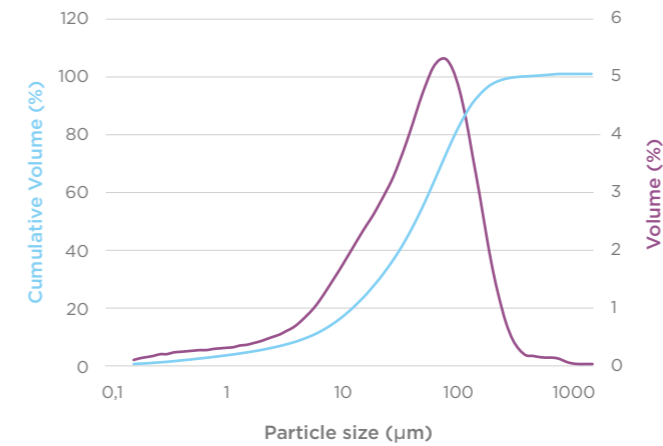
## Lactalpha 200

### Key physical figures

| Characteristics | Specification |
|-----------------|---------------|
| Bulk density    | 590 g/L       |
| Tapped density  | 860 g/L       |
| Hausner ratio   | 1.46          |
| Carr's index    | 31%           |

### Particle Size Distribution

PSD by laser diffraction (indicative values)



#### Laser diffraction

D10: 5 µm  
D50: 40 µm  
D90: 110 µm

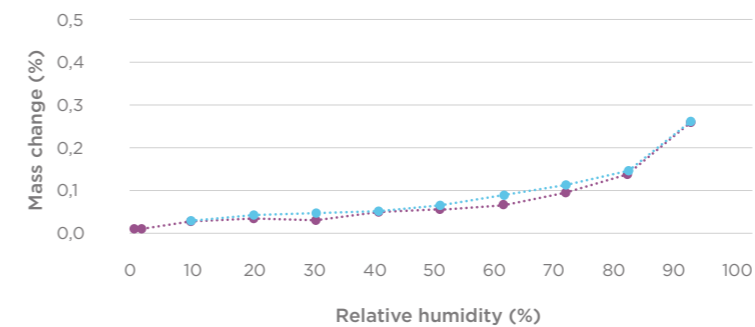
#### Air jet sieve

<45 µm: 50-65%  
<100 µm: ≥90%  
<150 µm: ≥96%  
<250 µm: ≥98%

— volume  
— cumulative volume

### Low water absorption for high stability

Sorption isotherm at 25°C



Lactalpha 200 sorption isotherm at 25°C, measured by SPSx-1Q vapor sorption analyzer.

At 25°C, Lactalpha 200 absorbs little water up to 90% relative humidity, and thus shows a great stability.

.....● desorption  
.....● sorption