

Trust our Pharmaceutical lactose



We would be pleased to know you and your needs.

**Contact us for any specific need or to receive a sample.**

**For more information on our products**  
[www.pharma.lactalisingredients.com](http://www.pharma.lactalisingredients.com)

**To contact us**  
[lactalisingredientspharma@fr.lactalis.com](mailto:lactalisingredientspharma@fr.lactalis.com)

**in**

**Follow us on LinkedIn**  
Lactalis Ingredients Pharma



# Lactalpha 150

**LACTOSE MONOHYDRATE**

**150 MESH**



# Lactalis Ingredients Pharma Your French trusted pharmaceutical lactose partner

Lactalis Ingredients Pharma contributes to the security of the drug supply chain by delivering the best of lactose to our customers.

Benefiting from the experience and technology of decades of commitment and passion, **we are able today to enter the excipients' market as a trusted pharmaceutical lactose.**

● EXPERTISE

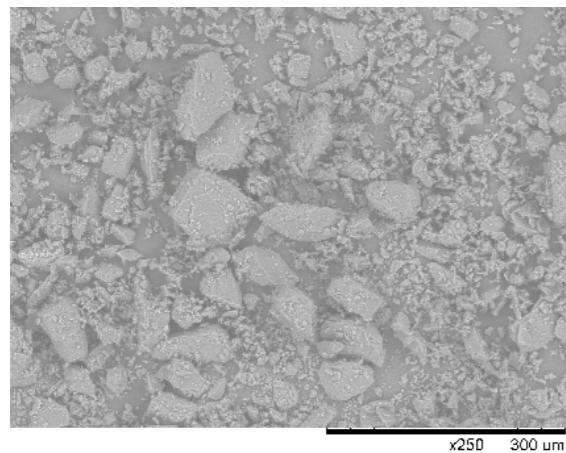
● QUALITY

● RELIABILITY

## Lactalpha 150 MILLED LACTOSE MONOHYDRATE



SEM image x 250



Lactalpha is a range of pharmaceutical grade milled and sieved lactose monohydrate. Lactalpha can easily be used for your OSD applications, in tablets from wet or dry granulation, capsules and sachets.

Lactalpha 150 is a 150 mesh pharmaceutical milled lactose conforming with the lactose monohydrate monographs of the current Pharmacopoeias (Ph. Eur., USP-NF and JP).

**Production site**  
Retiers, France

**Process**  
Wet granulation,  
dry granulation

**Lactose properties**  
Diluent / Good mixing /  
Tablet binder

**Galenic applications**  
Tablet

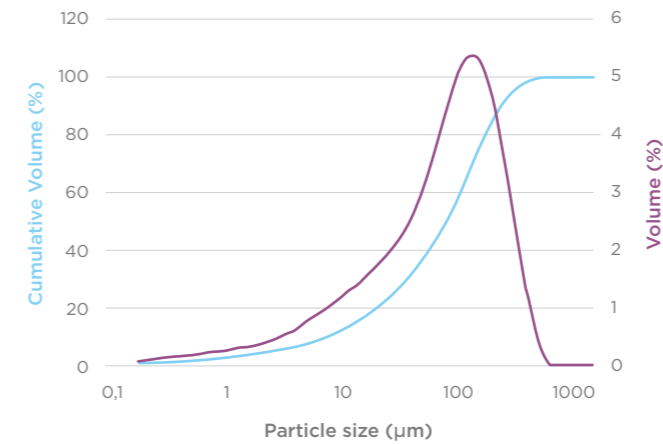
## Lactalpha 150

### Key physical figures

Characteristics	Specification
Bulk density	610 g/L
Tapped density	910 g/L
Hausner ratio	1.5
Carr's index	33%

### Particle Size Distribution

PSD by laser diffraction (indicative values)



#### Laser diffraction

D10: 7 µm  
D50: 65 µm  
D90: 190 µm

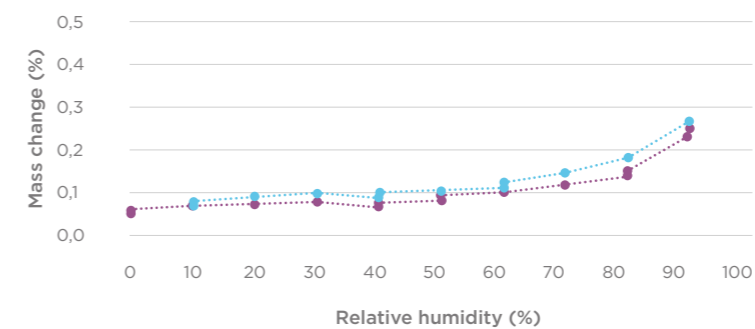
#### Air jet sieve

<45 µm: ≤50%  
<100 µm: ≥70%  
<150 µm: ≥85%  
<315 µm: ≥99%

— volume  
— cumulative volume

### Low water absorption for high stability

Sorption isotherm at 25°C



Lactalpha 150 sorption isotherm at 25°C, measured by SPSx-1µ vapor sorption analyzer.

At 25°C, Lactalpha 150 absorbs little water up to 90% relative humidity, and thus shows a great stability.

.....● desorption  
.....● sorption