

Trust our Pharmaceutical lactose



We would be pleased to know you and your needs.

Contact us for any specific need or to receive a sample.

For more information on our products
www.pharma.lactalisingredients.com

To contact us
lactalisingredientspharma@fr.lactalis.com

in

Follow us on LinkedIn
Lactalis Ingredients Pharma



Lactalpha 100

LACTOSE MONOHYDRATE

100 MESH



Lactalis Ingredients Pharma

Your French trusted pharmaceutical lactose partner

Lactalis Ingredients Pharma contributes to the security of the drug supply chain by delivering the best of lactose to our customers.

Benefiting from the experience and technology of decades of commitment and passion, **we are able today to enter the excipients' market as a trusted pharmaceutical lactose.**

EXPERTISE

QUALITY

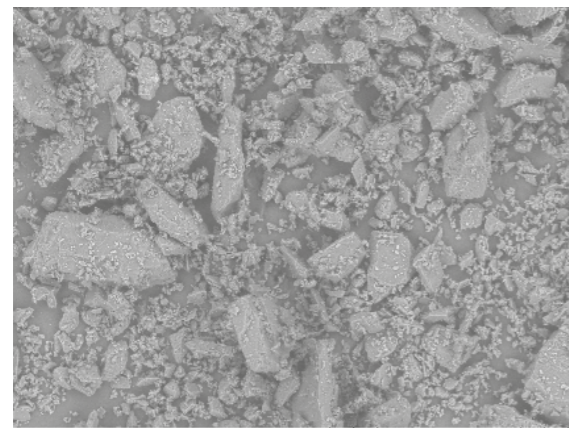
RELIABILITY

Lactalpha 100

MILLED LACTOSE MONOHYDRATE



SEM image x 250



x250 300 um

Lactalpha is a range of pharmaceutical grade milled and sieved lactose monohydrate. Lactalpha can easily be used for your OSD applications, in tablets from wet or dry granulation, capsules and sachets.

Lactalpha 100 is a 100 mesh pharmaceutical milled lactose conforming with the lactose monohydrate monographs of the current Pharmacopoeias (Ph. Eur., USP-NF and JP).

Production site
Retiers, France

Process
Dry blending

Lactose properties
Diluent / Flowability

Galenic applications
Capsule / Sachet



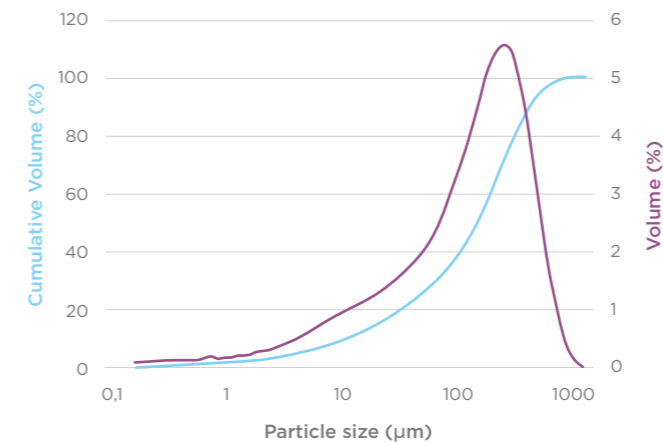
Lactalpha 100

Key physical figures

Characteristics	Specification
Bulk density	700 g/L
Tapped density	970 g/L
Hausner ratio	1.39
Carr's index	28%

Particle Size Distribution

PSD by laser diffraction (indicative values)



Laser diffraction

D10: 10 µm
D50: 110 µm
D90: 290 µm

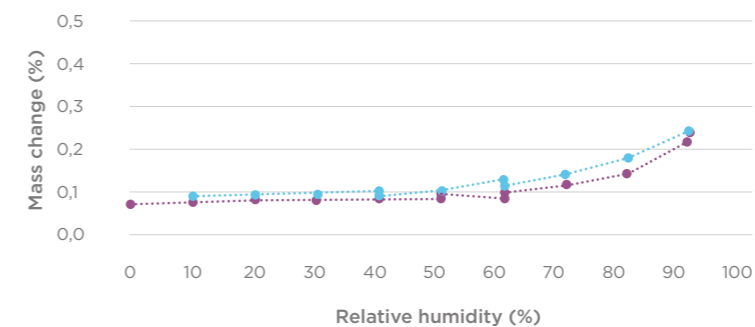
Air jet sieve

<63 µm: ≤40%
<150 µm: 60-80%
<250 µm: ≥95%

— volume
— cumulative volume

Low water absorption for high stability

Sorption isotherm at 25°C



Lactalpha 100 sorption isotherm at 25°C, measured by SPSx-1µ vapor sorption analyzer.

At 25°C, Lactalpha 100 absorbs little water up to 90% relative humidity, and thus shows a great stability.

.....● desorption
.....● sorption