

LACTALIS  
INGREDIENTS  
PHARMA

Trust our Pharmaceutical lactose



We would be pleased to know you and your needs.

Contact us for any specific need or to receive a sample.

For more information on our products  
[www.pharma.lactalisingredients.com](http://www.pharma.lactalisingredients.com)

To contact us  
[lactalisingredientspharma@fr.lactalis.com](mailto:lactalisingredientspharma@fr.lactalis.com)

in

Follow us on LinkedIn  
Lactalis Ingredients Pharma



LACTALIS  
INGREDIENTS  
PHARMA

# Lactalpha 50

LACTOSE MONOHYDRATE

50 MESH



# Lactalis Ingredients Pharma

## Your French trusted pharmaceutical lactose partner

Lactalis Ingredients Pharma contributes to the security of the drug supply chain by delivering the best of lactose to our customers.

Benefiting from the experience and technology of decades of commitment and passion, **we are able today to enter the excipients' market as a trusted pharmaceutical lactose.**

EXPERTISE

QUALITY

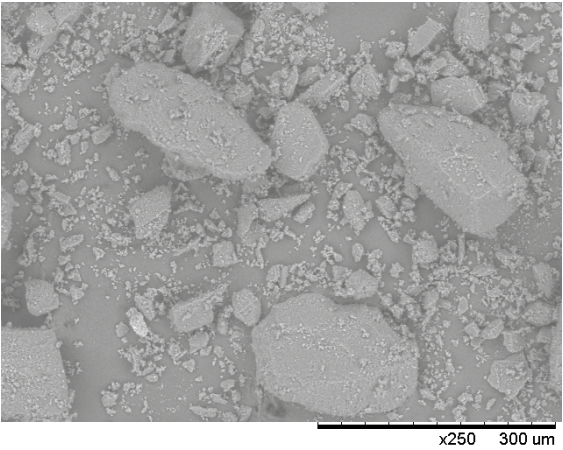
RELIABILITY

## Lactalpa 50

SIEVED LACTOSE MONOHYDRATE



SEM image x 250



Lactalpa is a range of pharmaceutical grade milled and sieved lactose monohydrate. Lactalpa can easily be used for your OSD applications, in tablets from wet or dry granulation, capsules and sachets.

Lactalpa 50 is a 50 mesh pharmaceutical sieved lactose conforming with the lactose monohydrate monographs of the current Pharmacopoeias (Ph. Eur., USP-NF and JP).

**Production site**  
Retiers, France

**Process**  
Dry blending

**Lactose properties**  
Diluent / Flowability

**Galenic applications**  
Capsule / Sachet

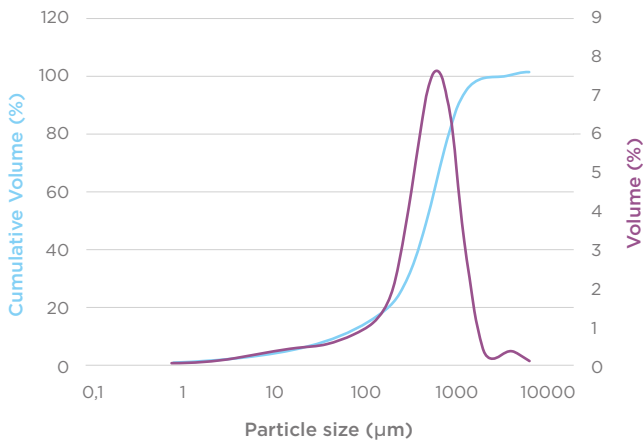
## Lactalpa 50

### Key physical figures

Characteristics	Specification
Bulk density	870 g/L
Tapped density	1 050 g/L
Hausner ratio	1.21
Carr's index	17%

### Particle Size Distribution

PSD by laser diffraction (indicative values)



#### Laser diffraction

D10: 50 μm  
D50: 330 μm  
D90: 720 μm

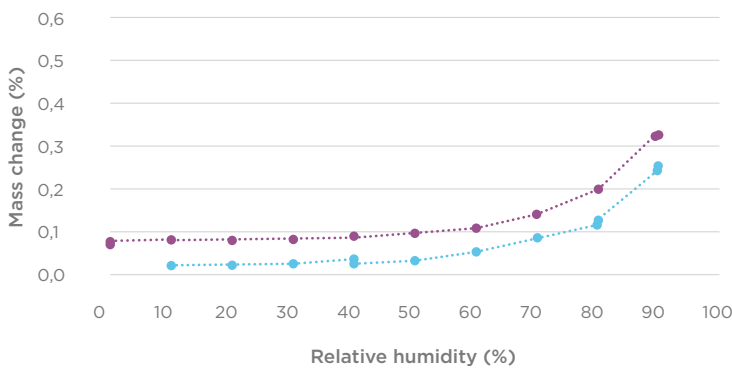
#### Air jet sieve

<200 μm: 20-60%  
<400 μm: ≥60%

— volume  
— cumulative volume

### Low water absorption for high stability

Sorption isotherm at 25°C



Lactalpa 50 sorption isotherm at 25°C, measured by SPSx-1μ vapor sorption analyzer.

At 25°C, Lactalpa 50 absorbs little water up to 90% relative humidity, and thus shows a great stability.

.....● desorption  
.....● sorption